

THREE BEAUTIFUL NEW C

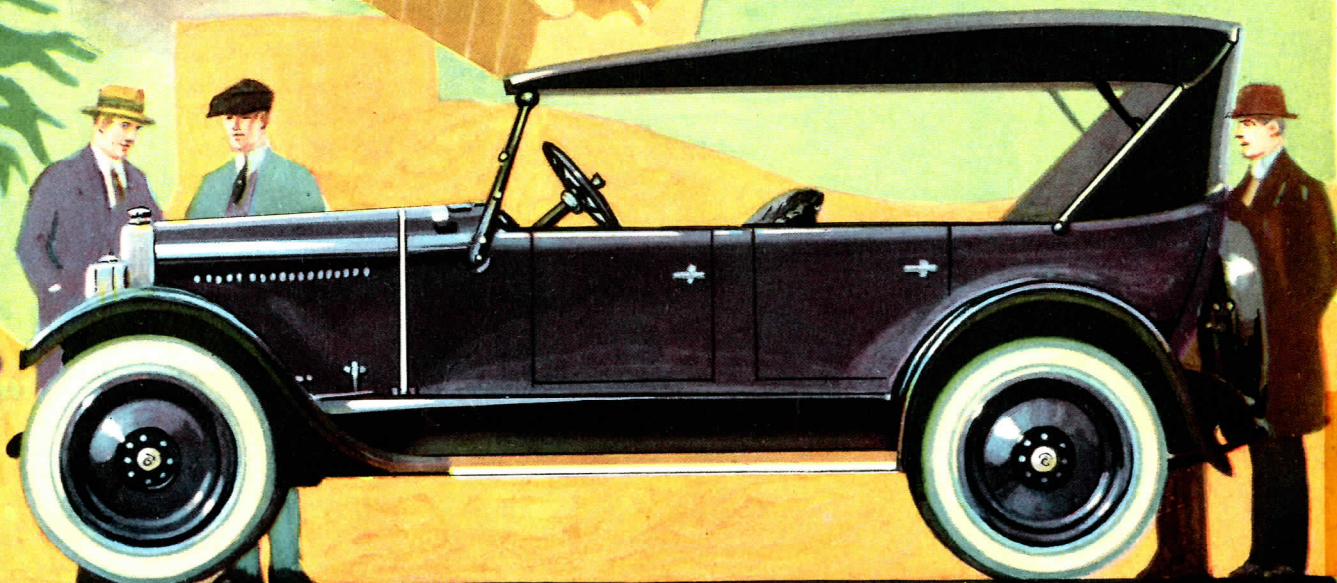
FILE COPY

PATENT LIBRARY
AMA - DETROIT

1924 C 165D
YEAR CODE BOX

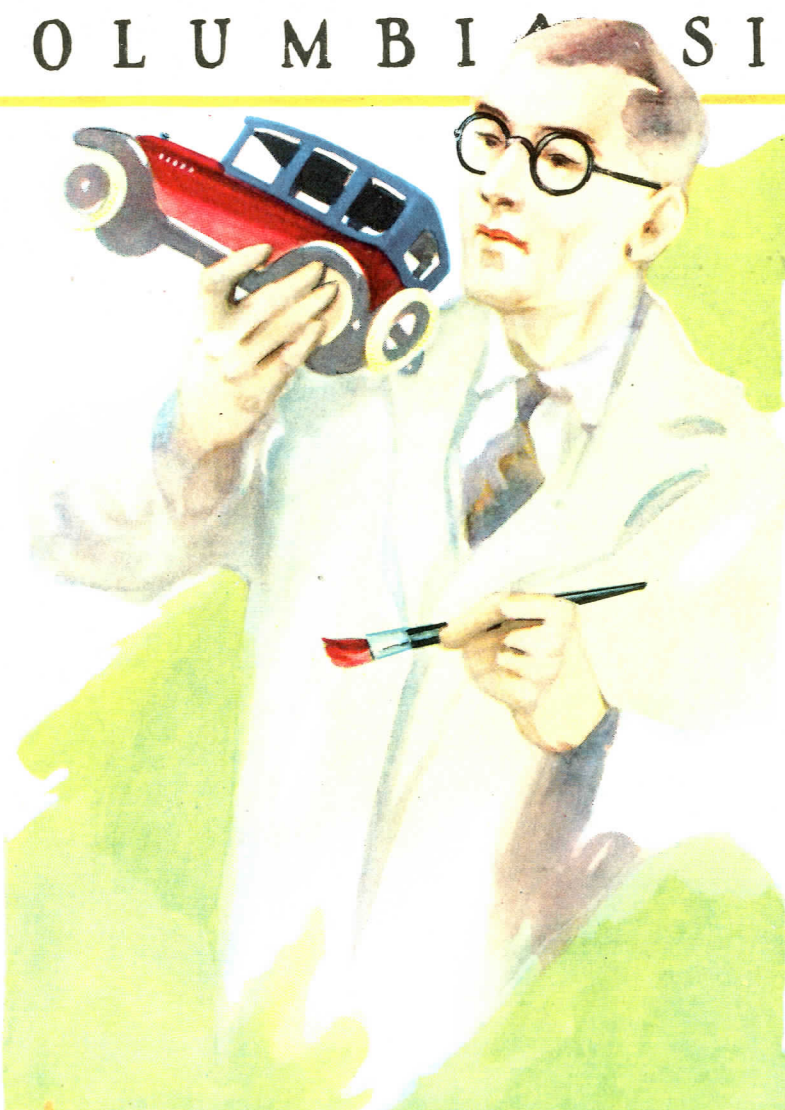
The Artcraft PHAETON

New radiator design, new hood and body lines. Beauty of finish and detail that you never expected within many hundreds of dollars of its price. And with this beauty comes exceptional roominess and comfort, plus *proved* performance. Upholstery is choice Spanish genuine leather. Very complete equipment; steel wheels at small added cost.



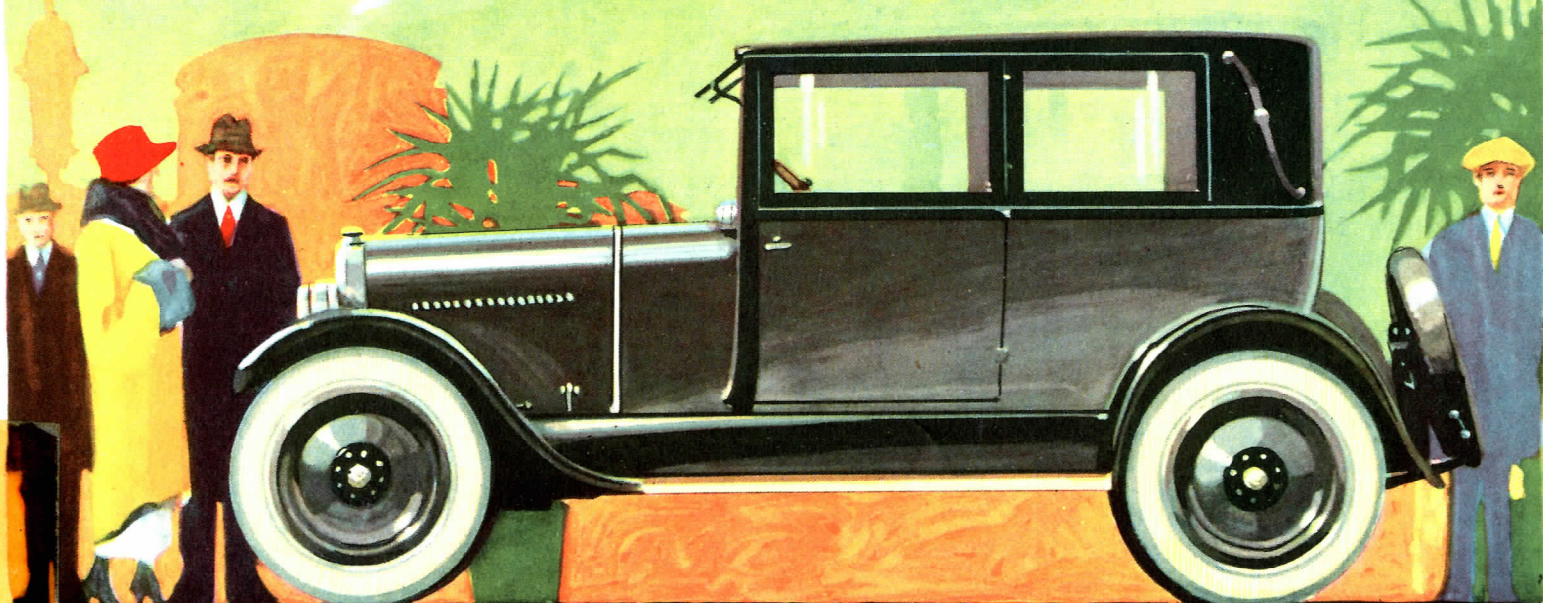
Columbia *Artcraft Phaeton*

COLUMBIA SIXES ON THE FA



The Artcraft SEMI-SEDAN

An entirely new Columbia body type, providing Sedan advantages and closed car protection, together with light weight and lower cost. Rear seat is wider than in most open cars, with lots of leg room for the tallest passenger. Front seat tilts forward. Doors are very wide—no twisting to get in or out. Instead of hanging a trunk on behind, a luggage compartment is built in—more convenient and better looking.



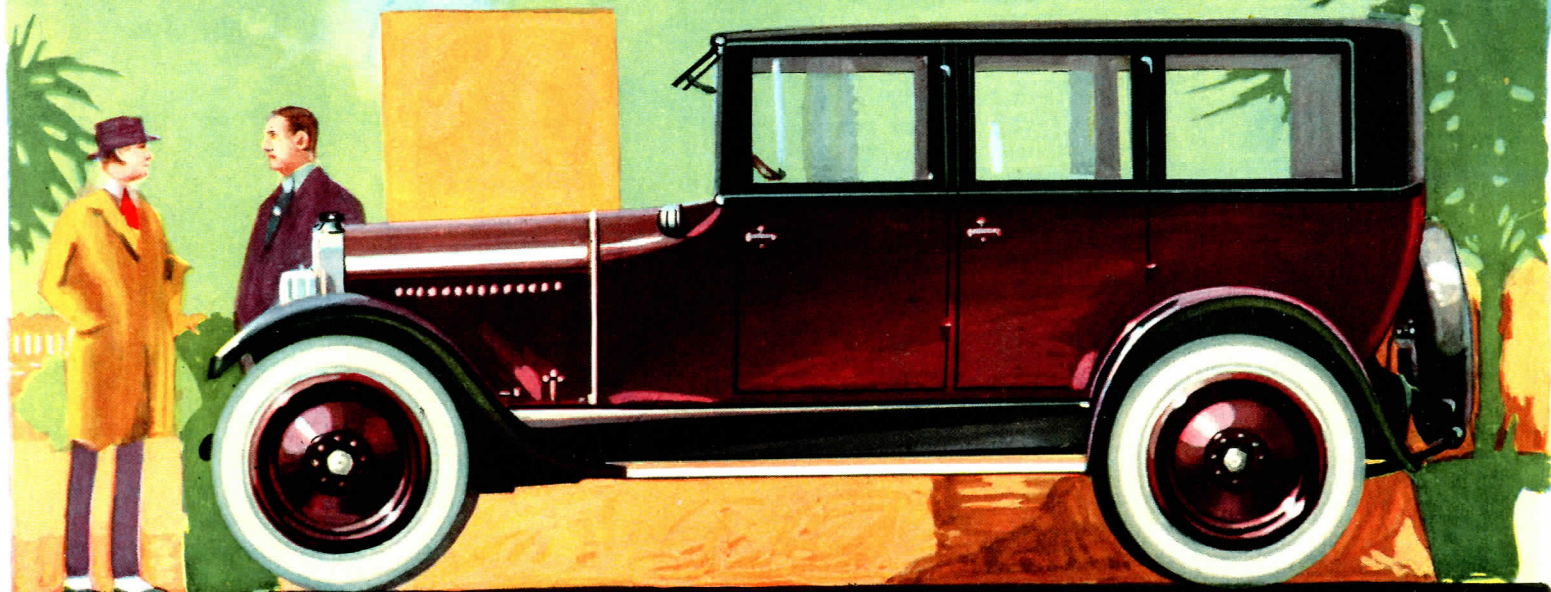
Columbia *Artcraft Semi-Sedan*

MOVIE ALL-FEATURE CHASSIS



The Artcraft SEDAN

New body lines, new coach work and new finish, in color combinations of rare beauty. The upholstery is heavy mohair plush—the best body cloth obtainable. Body hardware and fittings are the same type and quality as in many \$3000 closed models. Steel wheels, heater, rear-view mirror, windshield wiper, visor, locked-type robe rail, dome and parking lights are included in equipment.



Columbia *Artcraft Sedan*